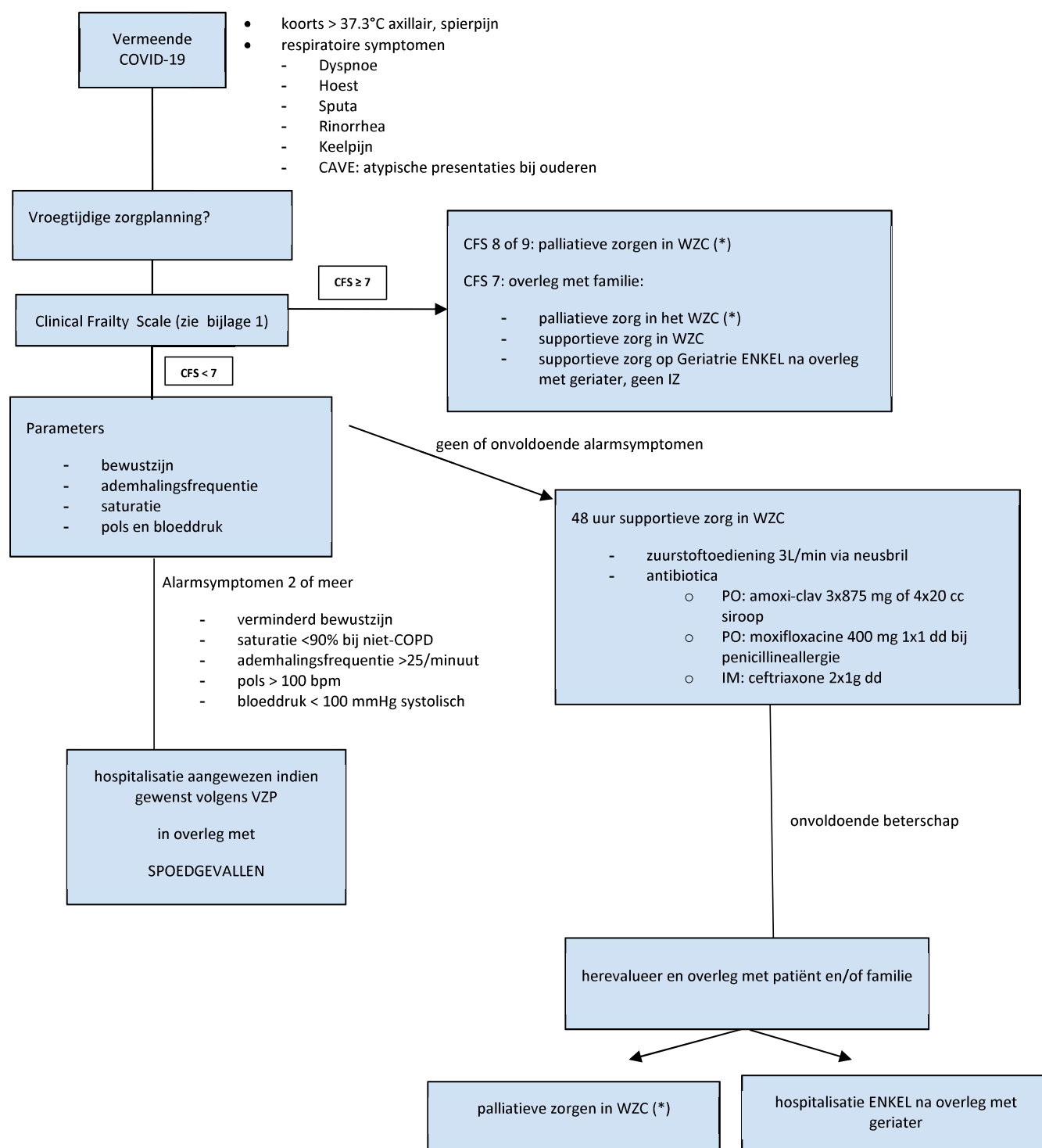


## Beslissing opname bij mogelijk COVIDpos WZC bewoner

### Flowchart COVID-19 voor bewoners van WZC



(\*) zie document "respiratoire symptomen bij palliatieve patiënten"

Noot: maatregelen bij vermoeden van COVID-19 in WZC (Agentschap Zorg & Gezondheid):

<https://zeg.login.kanooh.be/corona-richtlijnen-voor-zorgprofessionals#ouderenzorg>

**Noot: cardiopulmonale reanimatie in het WZC is niet aangewezen.**

## Bijlage 1: Clinical Frailty Scale (CFS)

### Clinical Frailty Scale\*

-  **1 Very Fit** – People who are robust, active, energetic and motivated. These people commonly exercise regularly. They are among the fittest for their age.
- 
-  **2 Well** – People who have **no active disease symptoms** but are less fit than category 1. Often, they exercise or are very **active occasionally**, e.g. seasonally.
- 
-  **3 Managing Well** – People whose **medical problems are well controlled**, but are **not regularly active** beyond routine walking.
- 
-  **4 Vulnerable** – While **not dependent** on others for daily help, often **symptoms limit activities**. A common complaint is being "slowed up", and/or being tired during the day.
- 
-  **5 Mildly Frail** – These people often have **more evident slowing**, and need help in **high order IADLs** (finances, transportation, heavy housework, medications). Typically, mild frailty progressively impairs shopping and walking outside alone, meal preparation and housework.
- 
-  **6 Moderately Frail** – People need help with **all outside activities** and with **keeping house**. Inside, they often have problems with stairs and need **help with bathing** and might need minimal assistance (cuing, standby) with dressing.



**7 Severely Frail** – **Completely dependent for personal care**, from whatever cause (physical or cognitive). Even so, they seem stable and not at high risk of dying (within ~ 6 months).



**8 Very Severely Frail** – Completely dependent, approaching the end of life. Typically, they could not recover even from a minor illness.



**9. Terminally Ill** - Approaching the end of life. This category applies to people with a **life expectancy <6 months**, who are **not otherwise evidently frail**.

#### Scoring frailty in people with dementia

The degree of frailty corresponds to the degree of dementia. Common **symptoms in mild dementia** include forgetting the details of a recent event, though still remembering the event itself, repeating the same question/story and social withdrawal.

In **moderate dementia**, recent memory is very impaired, even though they seemingly can remember their past life events well. They can do personal care with prompting.

In **severe dementia**, they cannot do personal care without help.

\* 1. Canadian Study on Health & Aging, Revised 2008.  
2. K. Rockwood et al. A global clinical measure of fitness and frailty in elderly people. CMAJ 2005;173:489-495.

© 2007-2009, Version 1.2. All rights reserved. Geriatric Medicine Research, Dalhousie University, Halifax, Canada. Permission granted to copy for research and educational purposes only.